

# Project Case Study

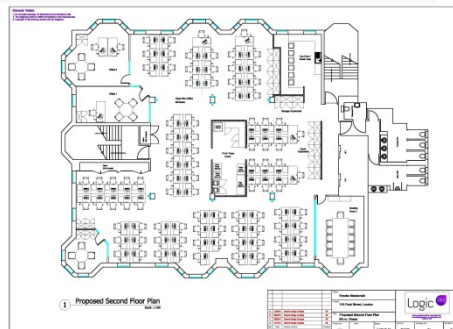
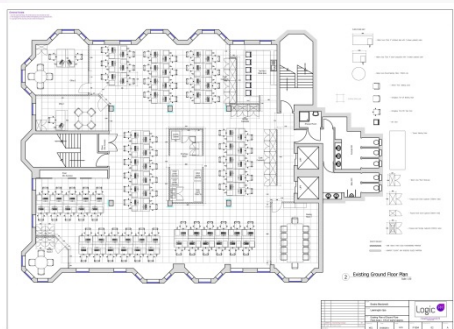
Client: Financial Services Company  
Project: Workspace optimisation  
Location: Mayfair, London  
Services: Space planning and Project Management

An existing client within Mayfair, London, required an additional 20 workstations due to business growth. Faced with the potential of taking new space elsewhere and lease end dates not aligning with their current space, they approached Logic PM. As part of our service we rationalised the existing layout and our in house designers optimised the workstation layout for their current office taking the current occupation level from 78 to 99. We undertook the management of building control, material and sub-contractor procurement and over a period of weekends managed the changeover to the space.

The works were priced and scheduled to complete over 3 weekends, but though our planning and careful management the project was completed in 2. The financial benefit for reducing the works by 1 weekend was also passed back to the client, saving over £4,000 against the project budget.

The client said in their testimonial letter:

*"The new desk positions have created the increased capacity we required, without any disruption to our daily operations. Thank you."*



**Logic PM Limited**  
Delivering Successful Projects

86-90 Paul Street | London | EC2A 4NE Website: [www.logicpm.co.uk](http://www.logicpm.co.uk)  
Tel: 0203 397 7444 Email: [info@logicpm.co.uk](mailto:info@logicpm.co.uk)

Logic PM can offer advice on any scheme you need to develop.

Take a look at [our services](#) and get in touch to find out more.

Tel: 0203 397 7444

Web: [www.logicpm.co.uk](http://www.logicpm.co.uk)

Email: [info@logicpm.co.uk](mailto:info@logicpm.co.uk)

**Logic** PM  
Project Management